

K

KRION® ARQ

Krion®  
PORCELANOSA SOLID SURFACE



## TABLE OF CONTENTS

<b>2</b>	THE SOLID SURFACE FROM PORCELANOSA GROUP
<b>4</b>	THE NEW GENERATION SOLID SURFACE
<b>6</b>	A TREND-SETTING FORWARD-LOOKING MATERIAL
<b>8</b>	A VERSATILE DESIGN SOLUTION
<b>10</b>	PROPERTIES
<b>12</b>	LEND FREE REIN TO THE IMAGINATION
<b>14</b>	APPLICATIONS
<b>16</b>	HOMES
<b>18</b>	DESIGNS
<b>20</b>	TRANSPORT SECTOR
<b>22</b>	HOTELS
<b>24</b>	HEALTHCARE
<b>26</b>	COMMERCIAL AND BUSINESS PREMISES
<b>28</b>	RESTAURANT AND CATERING
<b>30</b>	PUBLIC SPACES AND GOVERNMENT BUILDINGS
<b>32</b>	THROUGHOUT THE WORLD
<b>41</b>	TECHNICAL FEATURES

# KRION™

## THE SOLID SURFACE FROM PORCELANOSA GROUP

KRION™ is a new generation solid surface developed by SYSTEPOOL, a company that belongs to PORCELANOSA Group.

### SHOWROOMS

With more than 400 showrooms spread worldwide; from Madrid to New York, through cities like London, Milan or Paris, Porcelanosa Grupo thus assures its presence in the five continents to show the steady improvement in innovation and design of all its products.

### THE INFRASTRUCTURE

At Porcelanosa we base the success of our products on three premises; unconditional quality, a commercial network of our own and an infrastructure to embrace all these factors. We think the infrastructure is key to the success of our products. We want our installations to have a perfect combination of functionality, versatility and distinction.

**PRESENT IN 144 DIFFERENT COUNTRIES**  
**450 PORCELANOSA SHOWROOMS**  
**A STAFF OF SOME 5,000 PEOPLE**  
**85% OF OUR GOODS ARE EXPORTED ABROAD**  
**MANUFACTURERS SINCE 1973**











K<sup>®</sup>

**Nature** inspiration



# KRION™

## THE NEW GENERATION SOLID SURFACE

**KRION™ is a new generation solid surface developed by SYSTEMPOOL, a company that belongs to PORCELANOSA Group.**

It is a material that is warm to the touch and similar to natural stone. It is made of two-thirds natural minerals (ATH – aluminium trihydride) and a low percentage of high-resistance resins. This composition gives KRION™ a number of exclusive features: it does not have any pores, it is antibacterial without any type of additive, it is hard-wearing, highly resistant and easy to repair, only requires minimum maintenance and is easy to clean.

It is shaped in a similar way to wood, making it possible to cut the sheets, connect them and thermoform them to create curved sections, and can even be injection moulded to create designs and projects that are impossible with other materials.

Seamless sections can be created, preventing liquids from being absorbed and making cleaning and maintenance easier.

We offer a wide range of colours, including a white finish that stands out for its purity and neutrality in comparison with other similar materials.

It is an ecological material, as it is 100% recyclable. All products made of KRION™ can be reprocessed and reused in the production cycle.



**AN EXCLUSIVE FORMULA**



**NATURE INSPIRATION**



**A WIDE VARIETY OF COLOURS**



**KRION™ is a compact alumina material, made of alumina powder with a particle size of 7 microns upwards and high-tech monomers, and exclusive additives developed by our R&D department.**

**Alumina trihydrate (ATH) is extracted from mineral ore and refined, prior to its use, to ensure a purity of up to 99.8%.**

[EXCLUSIVE FORMULA]

**99.8%  
Pure ATH**





## A TREND-SETTING FORWARD-LOOKING MATERIAL CONCEIVED TO IMPROVE YOUR QUALITY OF LIFE

1

### **KRION™: PERFECT FOR EVERYDAY USE**

Conceived to offer a variety of different applications, KRION™ is the perfect solution for a wide range of settings: in kitchens as a countertop, as office furniture, or as an indoor wall covering in your favourite restaurant.



2

### **KRION™ - FOR YOU AND YOUR LOVED ONES**

Although KRION™ can be used in a variety of different venues, it is ideal for homes. Properties like its low level of VOC emissions, easy-to-clean surface, food-grade anti-bacterial properties, and resistance to chemicals, it ensures a safe household environment, particularly for kids.





3

### **ECO-FRIENDLY**

KRION™ is an environmentally-friendly material, made of two-thirds natural minerals. It does not release any volatile organic compounds and it can easily be repaired and restored to its original appearance.

4

### **A LONG-LASTING MATERIAL**

Because it is mainly formulated with natural minerals and a low percentage of high-resistance resins, KRION™ boasts the following properties: it is hard, resistant, long lasting, easily repairable, easy to clean, low on maintenance, and has no pores.







## A VERSATILE DESIGN SOLUTION IDEAL FOR DIFFERENT SECTORS

KRION™ is conceived for use in a wide variety of different applications. This makes it the perfect choice for a wide range of different settings.



### **HOMES**

Apartments,  
Villas,  
Lofts  
etc.



### **TRANSPORT SECTOR**

Aeronautical industry,  
Railway industry,  
Nautical sector,  
etc...



### **DESIGN**

Artwork,  
Products,  
Complementary items,  
etc...



### **PUBLIC SPACES AND GOVERNMENT BUILDINGS**

Schools,  
Museums,  
Auditoriums,  
Service stations,  
town halls,  
etc...



#### **RESTAURANT AND CATERING**

Bars,  
Restaurants,  
Casinos,  
etc...



#### **HOTELS**

Hotels,  
Campsites,  
etc...



#### **COMMERCIAL AND BUSINESS PREMISES**

Franchises,  
Private stores,  
Shopping centres,  
Head offices,  
Gymnasiums,  
etc...



#### **HOSPITALS**

Hospitals,  
Laboratories,  
Clinics,  
etc...



## MORE PROPERTIES... ...MORE POSSIBILITIES, MORE APPLICATIONS

Its different properties combine to make KRION™ an innovative, exclusive material.



### A high mineral content

This material is made of two-thirds natural minerals and a low percentage of high-resistance resins.



### Ultra-white

Technically KRION™ achieves a Whiteness of 99,8 %, if we combine this with its high Light Reflective Value, we find a pure and luminous material, something unique in Solid Surface materials.



### Antibacterial

KRION™ does not allow bacteria or fungi to grow or spread. This is an intrinsic property of the composition of the material, without the need for additives to achieve this permanent effect.



### Ecological / 100% Recyclable

KRION™ is an ecological material, as it is 100% recyclable. Any product made of KRION™ can be reprocessed and used again in its production process.



### A lightweight material

Because KRION™ has a lower density than other solid surfaces, like high-performance porcelain, artificial quartz or natural marble, it is easier to handle, for instance in the creation of countertops and more lightweight furniture, without relinquishing all the other properties of this solid surface.



### Compressive strength

A compression test is a test used to determine a material's resistance or capacity to withstand a certain load without it breaking or becoming deformed. Thanks to its high compressive strength, KRION™ has a compressive performance on a par with stone. These values can be used by designers and/or architects to calculate the design parameters for structures.



### Seamless joints

KRION™ sheets and shapes can be bonded together using bonding kits of a similar composition to KRION™. This guarantees uniform physical and chemical properties throughout.



### Bending strength

Bending strength is a combination of tensile and compressive strength. This type of load can deform materials by making them sag. Many solid materials cannot withstand high loads and they crack. In contrast, KRION™ has a high bending strength. Thanks to the high bending strength of KRION™, it is easier to transport and it can be used to create aesthetically pleasing overhanging sections and surfaces with higher safety guarantees than other materials.



### Low thermal conductivity

Thermal conductivity is a physical property, determining a material's capacity to transmit heat. The lower the thermal conductivity, the higher the material's insulative capacity. Using KRION™ on walls or other surfaces contributes to the energy efficiency of rooms or façades.



### Food grade

KRION™ is a food-grade product and meets US and European standards, meaning it can be used in contact with foodstuffs.



### Non porous

KRION™ is a non-porous material and so it prevents the build-up of bacteria. This makes it ideal for places with strict health and hygiene conditions, such as operating theatres or clean rooms.



### Easy to clean

Any normal stain, superficial burn, graffiti or marker pen stain can be removed, immediately returning the surface to its original appearance simply by following the recommended cleaning instructions.



### Thermoformable

KRION™ sheets can be thermoformed to create curves or shapes of varying radii.



### Backlighting

KRION™ Lux can be used to create backlit spaces. By combining different thicknesses of the material, it is possible to create spectacular lighting effects.



### Resistant to impacts

KRION™ has the highest capacity to absorb impacts of all solid surfaces. In impact tests using large-diameter balls (324 g) dropped from a height of 1.9 metres, it withstood ten consecutive impacts without breaking, demonstrating its very high resistance.



### Resistant to extreme environments

KRION™ surfaces are capable of withstanding extreme environments, such as marine environments, exposure to steam, immersion in water or freezing conditions, amongst others.



### Resistant to sunlight

KRION™ stands out for its remarkable stability when exposed to ultraviolet (UV) rays. The most stable colour is white; please consult the manufacturer for information on other colours.



### Highly resistant to fire

KRION™ product range is considered to be practically fireproof as it does not allow fire to spread. It is classified as Euroclass B-s1-d0 according to the UNE-EN 13501 standard and as B1 (with no restrictions) according to DIN 4102.



### Anti-static

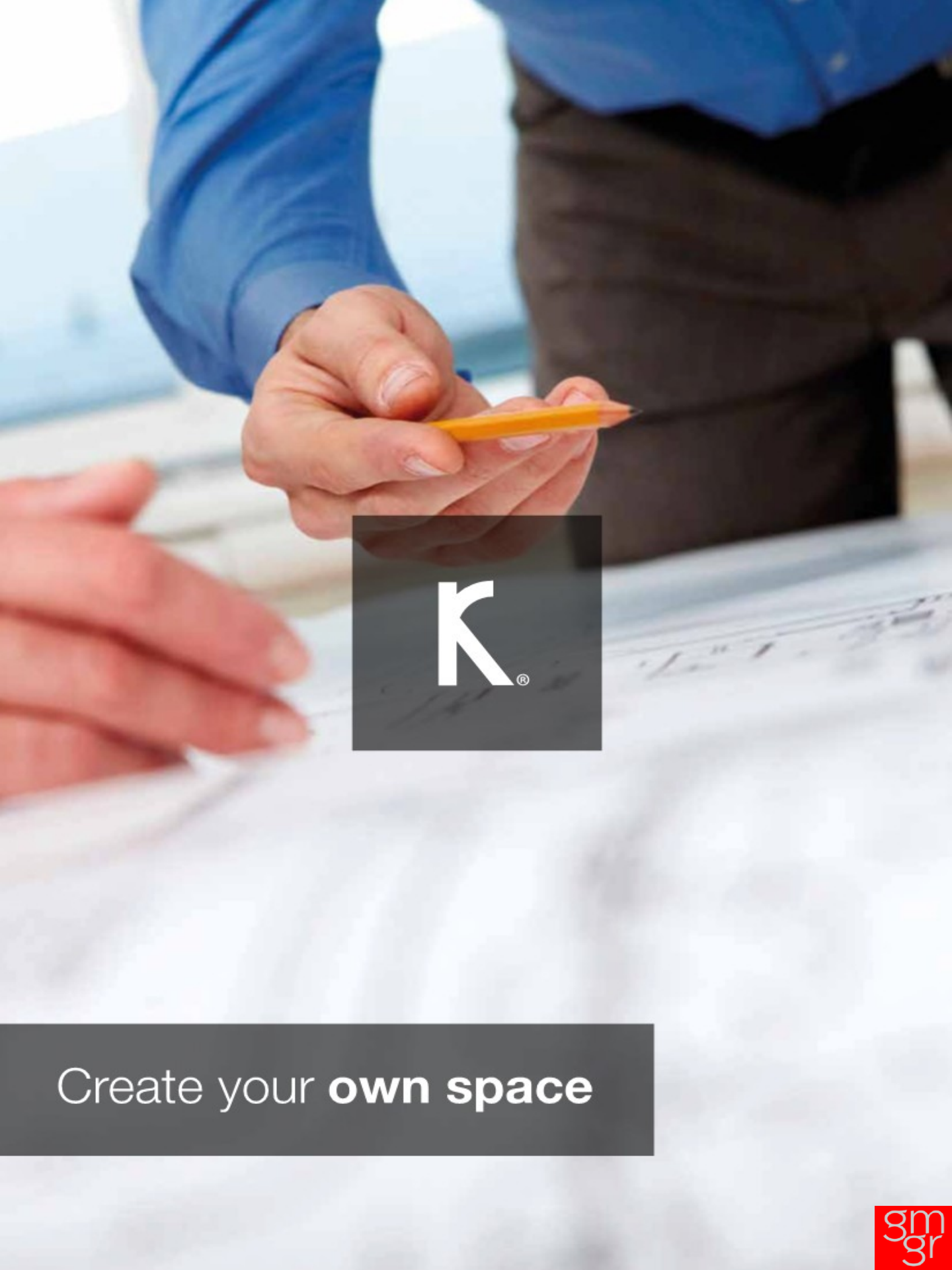
Static electricity is a build-up of electrical charges on the surface of a material, sometimes generated by friction with another material. Many materials are classified according to their electrical resistivity. KRION™ is rated as being anti-static and very close to insulative, according to the ESD (Electrostatic Discharge Association).



### Sound insulation

Thanks to its intrinsic physical properties - a seamless, low-density material of varying thicknesses with no pores -, KRION™ helps to insulate noise. This is due to its density, nil porosity, different thicknesses, and lack of seams. More specifically, if the noise level is reduced by 10 decibels, the human ear hears just half the resulting intensity. KRION™ can reduce the noise level by up to 14 decibels.





Create your **own space**

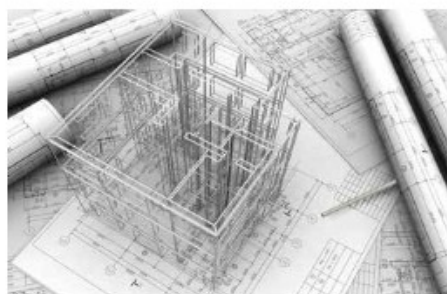
# LEND FREE REIN TO THE IMAGINATION

## WHATEVER YOU WANT TO CREATE, YOU CAN DO IT WITH KRION™

1

### THE PERFECT SOLUTION FOR THE CONTRACT MARKET

With KRION™, designers can take full advantage of all the properties that this material for the market offers.



2

### A PIONEERING MATERIAL

KRION™ is a state-of-the-art solid surface. The perfect choice for creating stylish settings.

3

### BROAD DESIGN POTENTIAL

KRION™ is a multipurpose, versatile material. Suitable for projects of all kinds, it is able to meet the most demanding of criteria.



4

### EASILY ADAPTABLE

Thanks to its intrinsic properties, KRION™ can be adapted to fit in perfectly with design projects without having to make any concessions.



5

### FITTING IN WITH CLIENT NEEDS

Whatever the setting, KRION™ can be used to create the perfect design solution. And it can be adapted to fit in with Clients' functional, dimensional and aesthetic requirements.

6

### SUITABLE FOR A WIDE VARIETY OF VENUES

Thanks to its broad design potential and exclusive appeal, KRION™ can be used to create unique settings in homes, public buildings, restaurants and bars, shops, hotels, and hospitals, among other places.

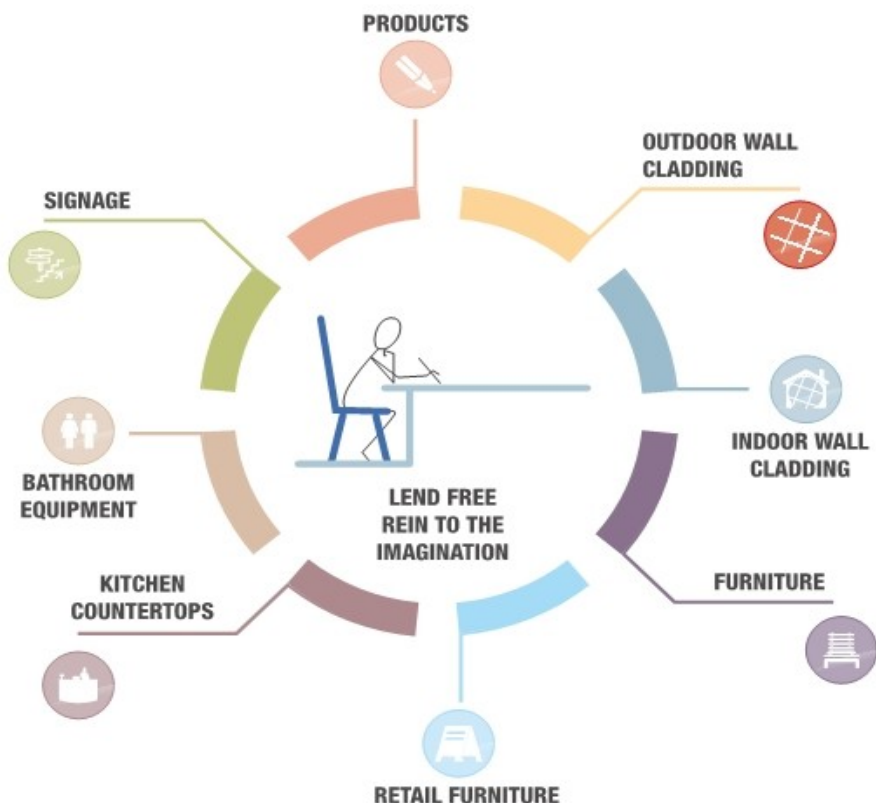




# APPLICATIONS

## INSPIRING NEW IDEAS

The KRION™ range's numerous different series can be used in a wide variety of applications. Each of the properties of KRION™ sheets can inspire a new idea, a new design concept or a new application.



### PRODUCTS

Endless designs.



### OUTDOOR WALL CLADDING

Façades.





## INDOOR WALL CLADDING

Walls, architectural structures.



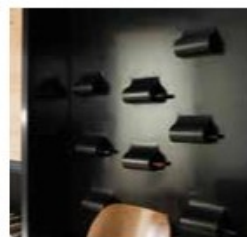
## FURNITURE

Counters, office furniture indoor furniture.



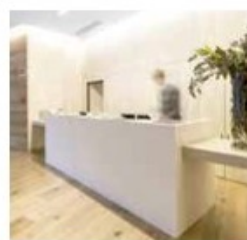
## RETAIL FURNITURE

Display units, displays, bottle racks.



## KITCHEN COUNTERTOPS

Kitchens, bar counters, sales counters.



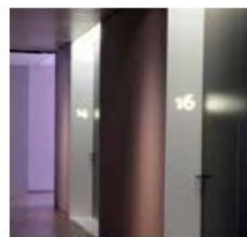
## BATHROOM EQUIPMENT

Bathroom countertops, washbasins shower trays, bathtubs, accessories.



## SIGNAGE

Logos, signs.







## HOMES

A home's interiors reflect the soul and lifestyle of each of its owners. With KRION™, not only can comfort and functionality be brought to homes, but also a unique personal touch.

Given the endless possibilities that it offers, KRION™ can be used in all rooms in the house: in living rooms, kitchens, bathrooms, bedrooms and as furniture.

### Applications



Products



Outdoor wall cladding



Indoor wall cladding



Furniture



Retail furniture



Bathroom equipment

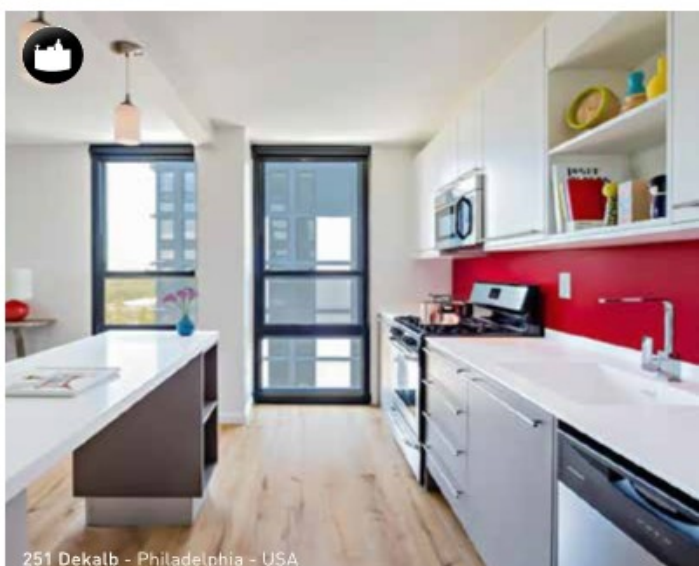


Kitchen countertops



Signage

**THANKS TO ITS EXCLUSIVE  
COMBINATION OF AESTHETIC AND  
TECHNICAL CHARACTERISTICS,  
KRION™ IS THE PERFECT SOLUTION  
FOR HOMES.**



251 Dekalb - Philadelphia - USA



Casa Balint / Bétera - Valencia- Spain



Atico / Gandia - Valencia- Spain



Ibiza Showroom Pictures by Verónica Martínez / Ibiza - Spain



Biela chairs by András Kerékgyártó / Törökbálint - Hungary





Société XL Insurance / Paris - France



## DESIGN

Only a material like KRION™ makes possible the success of turning ideas into realities. KRION™ will provide the ultrawhite finish.

### Applications



Products



Outdoor wall cladding



Indoor wall cladding



Furniture



Retail furniture



Bathroom equipment

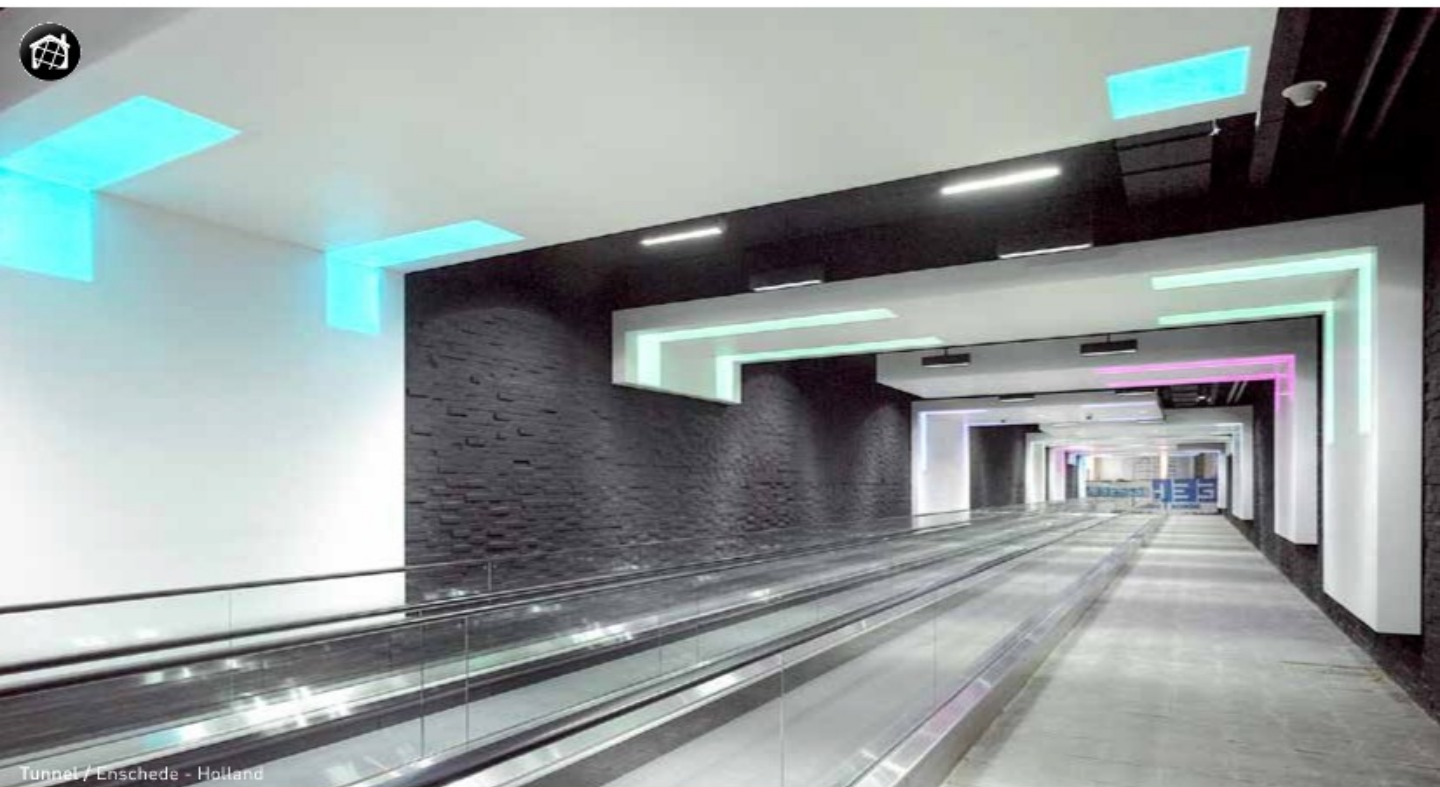


Kitchen countertops



Signage

**THE LATEST ADVANCES IN PRODUCTION PROCESSES MAKE IT POSSIBLE TO INJECT THE MATERIAL TO CREATE COMPLEX SHAPES.**







## TRANSPORT SECTOR

KRION™ is also the perfect choice for the transport sector, thanks to its durability, imperviousness, resistance to the elements and to corrosion, and its easy adaptability to design projects.

### Applications



Products



Outdoor wall cladding



Indoor wall cladding



Furniture



Retail furniture



Bathroom equipment



Kitchen countertops



Signage



Aeroporto G. Marconi Bologna / Bologna - Italy

**THANKS TO ITS DURABILITY,  
WATERPROOF AND CORROSION  
RESISTANCE KRION™ IS A  
PREFERABLE OPTION IN THE  
NAUTICAL MARKET.**



## HOTELS

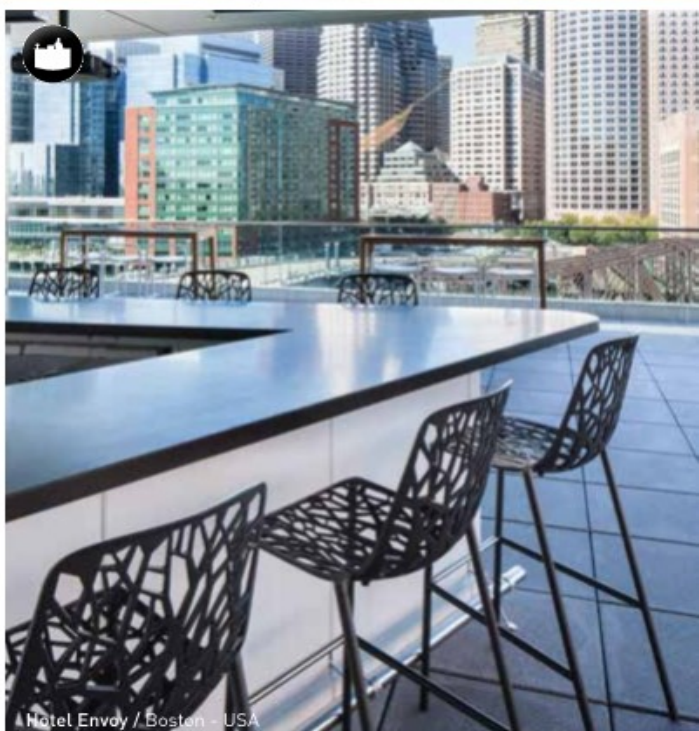
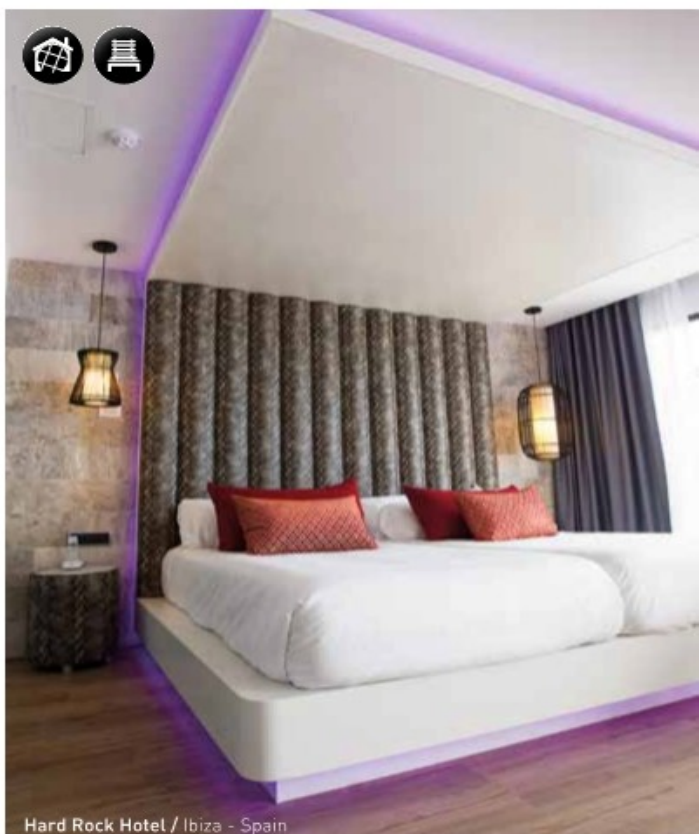
Its extensive design possibilities make it possible to create spaces from hotel lobbies through to room elements, including furnishings, decoration or bathroom fixtures.

KRION™ also offers a wide range of possibilities for spa areas thanks to its non-porous surface and anti-bacterial properties.

### Applications

-  Products
-  Outdoor wall cladding
-  Indoor wall cladding
-  Furniture
-  Retail furniture
-  Bathroom equipment
-  Kitchen countertops
-  Signage

**SPAS, SWIMMING POOLS, SAUNAS  
OR TURKISH BATHS ARE JUST SOME  
OF THE ELEMENTS THAT CAN BE  
CREATED WITH THIS VERSATILE  
MATERIAL.**





Hotel Saint-Gelais / Angoulême - France



Hotel Mercure Madrid Centro (Lope de Vega) / Madrid - Spain





## HEALTHCARE

KRION™ is an ideal material for use in healthcare centres. Thanks to its anti-bacterial properties and additive-free composition, it is recommended for use in consulting rooms or wards, curing stations or even operating theatres, where optimum hygiene conditions are essential.

Also, the possibility of chemically welding the sheets together and curving them makes it possible to create continuous, seamless surfaces, without joints or corners where microorganisms can accumulate.

### Applications



Products



Outdoor wall cladding



Indoor wall cladding



Furniture



Retail furniture



Bathroom equipment



Kitchen countertops



Signage

**KRION™ EXCEEDS THE CRITERIA  
OF THE US ASTM G 21 AND THE  
EUROPEAN UNE-EN ISO 846  
STANDARDS.**



Hospital Universitario A Coruña (CHUAC) / A Coruña - Spain



Farmacia Gran Vía / Valencia - Spain

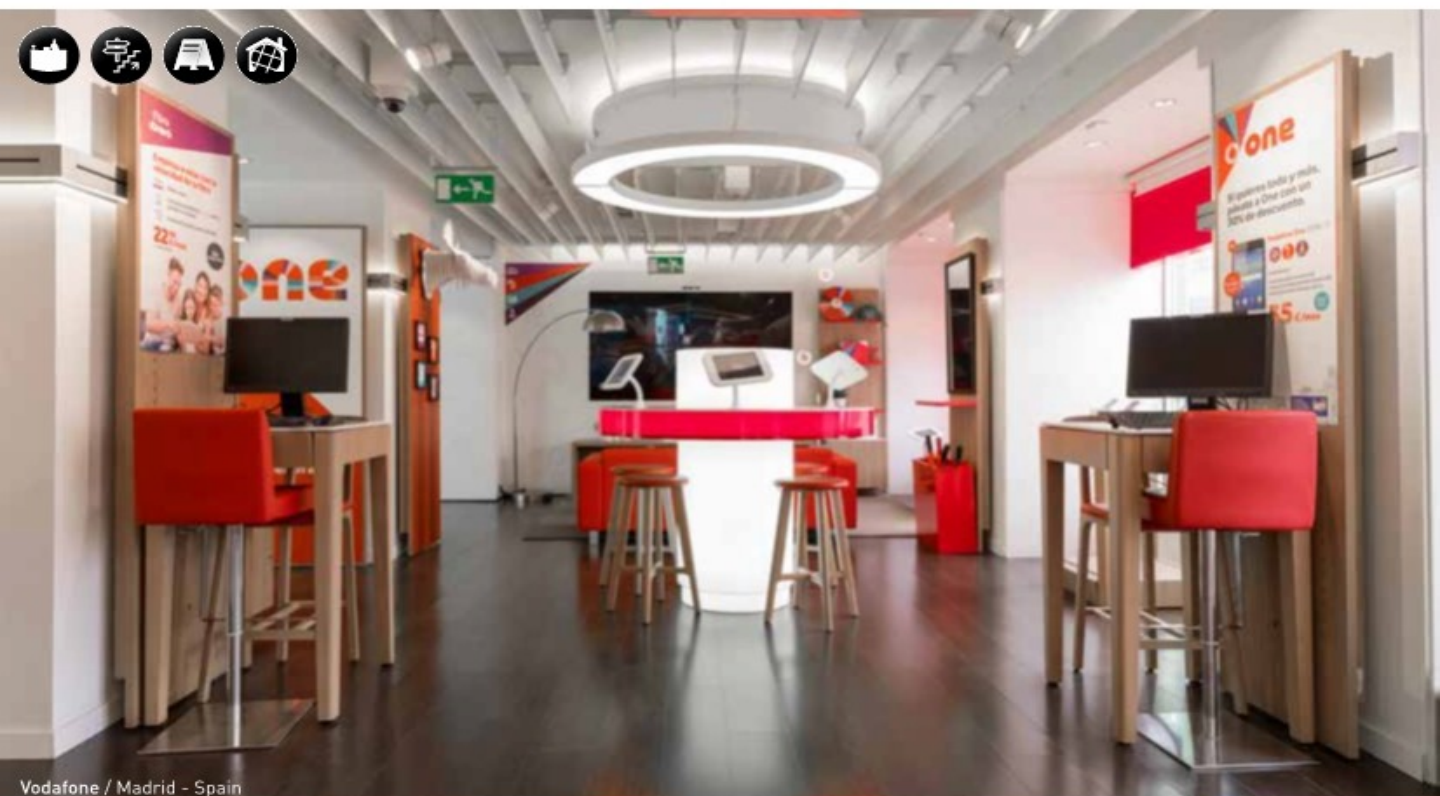




PositrónMed / Santiago de Chile - Chile



Hospital Virgen del Castillo / Murcia - Spain







## COMMERCIAL AND BUSINESS PREMISES

KRION™ offers infinite possibilities for the design of commercial spaces, and is a key element in creating brand awareness and presenting products in the best possible way.

KRION™ offers infinite possibilities for commercial decoration, with an extensive palette of colours and the ability to connect sheets and curve them, to obtain genuine combinations of colours and ergonomic shapes.

### Applications



Products



Outdoor wall cladding



Indoor wall cladding



Furniture



Retail furniture



Bathroom equipment



Kitchen countertops



Signage



**SOLID SURFACES ARE THE OPTION PREFERRED BY THE MAIN INTERNATIONAL FRANCHISES, AS DIFFERENT ELEMENTS CAN BE UNIFORMLY INTEGRATED.**





## RESTAURANT AND CATERING

The comfort and warmth of KRION™ make it an ideal material for use in interior design projects for the catering trade sector. It is particularly suitable for use in restaurants as it is easy to clean and only requires minimum maintenance. Its durability, the possibility of shaping it to obtain any type of design and its anti-bacterial qualities mean it can be used for practically any type of application.

### Applications



Products



Outdoor wall cladding



Indoor wall cladding



Furniture



Retail furniture



Bathroom equipment



Kitchen countertops



Signage

**SPECIFIC CURVE RADII CAN BE OBTAINED BY APPLYING HEAT AND PRESSURE FOR A SPECIFIC PERIOD OF TIME IN ORDER TO ACHIEVE THE REQUIRED SHAPE.**



Restaurante Bambú / Salamanca - Spain



Restaurante Otto / Madrid - Spain



Tony Macarony - Prosecco Bar / Edinburgh - Scotland



LIDO Restaurant / Toon - Scotland





El Centro, Northeastern Illinois University / Chicago - USA



Noor Island / Abu Dhabi - United Arab Emirates





Quioscos de Información Turística / Madrid - Spain



French Embassy / Bangkok - Thailand



## PUBLIC SPACES AND GOVERNMENT BUILDINGS

KRION™ is specially suited for public spaces used by large numbers of people. It meets the maximum hygiene requirements for installation in public bathrooms and other public areas. As a material that is non-porous and easy to clean and repair in situ, it is ideal for continuous use in public areas, and is highly resistant to acts of vandalism.

### Applications



Products



Outdoor wall cladding



Indoor wall cladding



Furniture



Retail furniture



Bathroom equipment



Kitchen countertops



Signage

**EVEN WHEN AFFECTED BY SERIOUS STAINS, THE MATERIAL CAN BE RETURNED TO ITS ORIGINAL APPEARANCE SIMPLY BY FOLLOWING THE RECOMMENDED CLEANING INSTRUCTIONS.**



# KRION™

## THROUGHOUT THE WORLD

### AMERICA

Sede Google – Santiago de Chile – Chile  
 Clínica Las Condes – Chile  
 Forever 21 – Chile  
 Tecnológico – Antioquia – Colombia  
 Clínica del corazón - Bucaramanga - Colombia  
 Centro comercial Portal del Norte - Medellín - Colombia  
 Constructora Colpatria – Colombia  
 Mapfre – México  
 Toilets – Torre Levante – México  
 Laboratory areas – Pluspetrol – Perú  
 Private house La Romana – Rep. Dominicana  
 Casino Enjoy – Uruguay  
 Ava matsu restaurant – Los Angeles – USA  
 Environdental – Los Angeles CA – USA  
 Hawaii airport terminal B – USA  
 Google corporate office Irvine CA – USA  
 Doc Alexander dental Santa Barbara CA – USA  
 Downtown family Dental Torrance CA – USA  
 Syneger dental beverly hill CA – USA  
 LAX airport America airline – USA  
 Vanilla flex at LAX terminal Bradley – USA

### AFRICA

Private house - Morocco  
 Raffinity Casablanca - Morocco  
 Lagos - Posmoreti - Nigeria

### ASIA

Ghayathi hospital – Abu Dhabi  
 Omeir hospital – Abu Dhabi  
 Sofitel Hotel and office tower Haikou – China  
 Adnoc research center – Dubai  
 Climate control room & spa – Dubai  
 Dubai duty free – Dubai  
 Formarke school – Dubai  
 Private house – Delhi – India  
 Harvey Nichols – Kuwait  
 Police Station – Muscat – Oman  
 Hotel Astoria – Boracay – Philippines  
 Hotel Astoria – Manila – Philippines  
 Marsa Malaz Hotel – Doha – Qatar  
 Milaha Main office – Doha – Qatar  
 Apartment Condominium – Singapore  
 Bao Hong Residential – Taipei – Taiwan  
 Tango Hotel – Taipei – Taiwan  
 Emporium shopping mall – Bangkok – Thailand  
 French Embassy – Bangkok – Thailand  
 KFC - Bangkok – Thailand  
 Bershka Store – Istanbul – Turkey  
 Doga Koleji – Istanbul – Turkey



## World Wide **Projects**

### EUROPE

Private house – Geel – Belgium  
 YOGO – Frozen Yogur Bar – Finland  
 Conseil regional d'aquitaine – Bordeaux – France  
 Institut D'optique D'aquitaine – Bordeaux – France  
 Boulangerie Paul / Brioche Dorée – France  
 Hotel Akoya , Ile de la Réunion – France  
 Escuela Olympe de Gouges – Le Plessis Trévis – France  
 Win Age – Montpellier – France  
 Société Générale – Carquefou – Nantes – France  
 Empreinte Lille – Lille – France  
 HI-PANDA – Paris – France  
 Hotel Chavanel – Paris – France  
 Nespresso Champs Elysées – Paris – France  
 Horseland – Presmesques – France  
 Banque Populaire de l'Ouest – Rennes – France  
 Toulouse Stadium – Toulouse – France  
 Spa Bordeaux – France  
 Ehpad de vieille st giron – France  
 Hydromassage pool – Peter Grube – Germany  
 Airport – Bologna – Italy  
 Bershka – Bologna – Italy  
 Greda Headquarters – Carpi – Italy  
 Restaurant Delfino Blu – Lipomo – Italy  
 Auditorio – Roma – Italy  
 BMW – Italy  
 Hotel Rubens – Italy  
 Kerasan – Kosovo

Hotel Les Terrasses d'Eze – Montecarlo – Monaco  
 Yatch Club – Montecarlo – Monaco  
 Bershka – Hilversum – Netherlands  
 Private house – Oradea – Rumania  
 Museo del cafe – Lisbon – Portugal  
 Airport Pulkovo – S.Petersburgo – Russia  
 IM CLINIC – Barcelona – Spain  
 Gynecological Clinic and Dental – Castellón – Spain  
 Attic A-Cero – Gandia – Spain  
 Dental Clinic Ortega&Cubillo – Granada – Spain  
 Hard Rock – Ibiza – Spain  
 3M – Madrid – Spain  
 AC-Marriott Cuzco – Madrid – Spain  
 Bershka – Madrid – Spain  
 Hotel Son Moll – Mallorca – Spain  
 Miss Sushi – Madrid – Spain  
 Gerhardt Braun Gallery – Mallorca – Spain  
 Hotel Melia Don Pepe – Marbella – Spain  
 Hospital Virgen del Castillo – Murcia – Spain  
 Imagine Lounge Bar – Murcia – Spain  
 Arenal Perfumery – Ourense – Spain  
 Balabushka – Salamanca – Spain  
 Bambú – Salamanca – Spain  
 Ocean Club – Salamanca – Spain  
 Hotel Zenit – San Sebastian – Spain  
 Hotel Taburiente – Tenerife – Spain  
 Artexpreso – Valencia – Spain  
 Casino Cirsa – Valencia – Spain

House Balint – Valencia – Spain  
 Miss Sushi – Valencia – Spain  
 Vertical – Terrace Restaurant - Valencia – Spain  
 Sister Cities Plaza – Valladolid – Spain  
 Chalet - Alpes D'huez – Switzerland  
 Karisov Swimming Pool – Epalinges – Switzerland  
 Chocolatier – Switzerland  
 The marque hotel – Cambridge – UK  
 British Airways lounge – Edinburgh – UK  
 Ocean Buses – Edinburgh – UK  
 Tony Macaroni – Edinburgh – UK  
 Hotel Melia White House – London – UK  
 Melia – London – UK  
 Lido Restaurant – Troon – UK  
 Santander – UK  
 BMW – UK

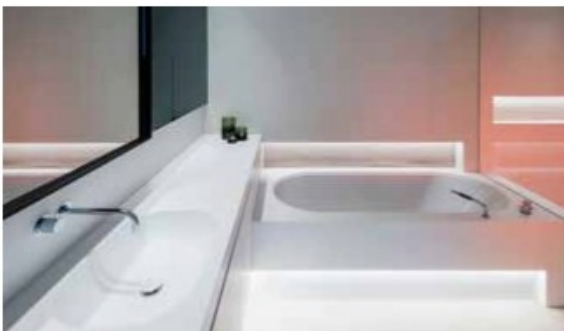
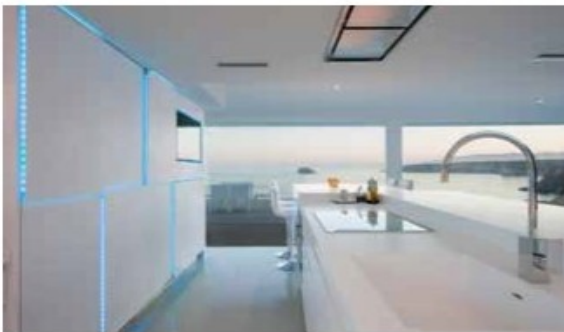
### OCEAN

Adelaide Central Plaza – Adelaide – Australia  
 Shopping Mall – Sidney – Australia





## HOME





## DESIGN









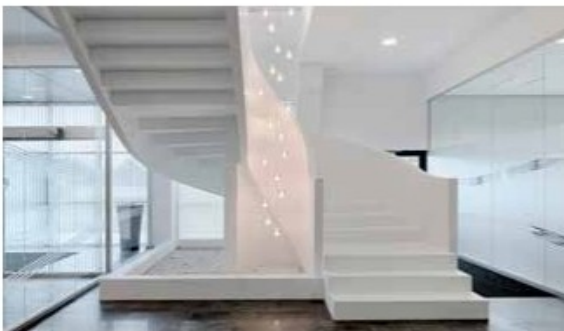


## HEALTHCARE





## COMMERCIAL AND BUSINESS PREMISES







## RESTAURANT AND CATERING







## PUBLIC SPACES AND GOVERNMENT BUILDINGS



## TECHNICAL FEATURES

---

The technical characteristics of KRION™ Lux are shown below, in accordance with the relevant standards. KRION™ Lux has also been awarded certificates like the NSF<sup>(1)</sup>, Greenguard<sup>(2)</sup>, and SCS<sup>(3)</sup> certificates, together with fire resistance certificates like the B-s1-d0<sup>(4)</sup>, B1<sup>(5)</sup> (Germany), or UL94HB<sup>(6)</sup> and NFPA 259<sup>(6)</sup> (United States) certificates. It also holds special certificates like the Russian hygiene and fire<sup>(7)</sup> safety certificates, the National Test Center of Polymer and Building Materials certificate, the French CSTB<sup>(8)</sup> for façades and the European Reach certificate<sup>(9)</sup>...

## TECHNICAL FEATURES

KRION™ PORCELANOSA Solid Surface is rated as having a Euroclass B s1 d0 fire resistance as per the EN 13051-1:2003 standard and a B1 fire resistance (with no restrictions) as per DIN 4102. It has been awarded Greenguard Gold and NSF/ANSI 5 Food Equipment Materials certificates and it complies with the REACH Regulation, with certificate of compliance HKHL 150100278&JL. It has also been declared BPA free under test no. 220.I.1508.076.ES.01

Property	Method	Result	Units / Measures
Density	ISO 1183 / ASTM D792	1,71 - 1,77	g/cm <sup>3</sup>
Flexural modulus of elasticity	ISO 178 / ASTM D790	8500 - 11900	MPa
Flexural strength		60 - 78	MPa
Elongation	ISO 178 / ASTM D638	0,7-0,85	%
Tensile modulus	ISO 527 / ASTM D638	9380 - 11325	MPa
Tensile strength		40 - 60	MPa
Compressive strength	ISO 604	97 - 117	MPa
Impact resistance (ball drop)	ISO 19712-2 UNE EN 438-2 ISO 4586-2 NEMA LD 3	Satisfactory (No break)	324 g ball / Height 1.9m (2 m)
Abrasion resistance	UNE EN 438-2 ISO 4586-2	0.028	% mass / Δ mass (%) every 25 rev.
Resistance to boiling water	UNE EN 438-2 ISO 4586-2 NEMA LD 3	0.1 - 0.30	% weight
		0.1 - 0.30	% thickness
		Level 5: No change	Levels 1-5
Resistance to bacteria	ISO 846 / ASTM G22	No proliferation	
Resistance to fungi	ISO 846 / ASTM G21		
Anti-slip properties depending of grit finish from (40-600)	UNE ENV 12633	Rd = 40 Class 2 - Rd = 12 Class 0	SR (Roughness) Pendulum
	ASTM C1028	0.8 - 0.69	Dry Static Coefficient
		0.82 - 0.62	Wet Static Coefficient
	ANSI A.137.1:2012	0.7 - 0.35	Wet Dynamic Coefficient
Dimensional stability	ISO 4586-2 UNE EN 438-2	0.02 (90% HR & 23°C)	% change in length
		0.08 (23% HR & 23°C)	
Dimensional stability at high temperatures	UNE-EN 438-2	0.18 (70°C)	% change in length
		0.10 (95% HR & 40°C)	
Linear thermal expansion	ISO 11359-2 ASTM D696 UNE-EN 14581	3,5 x 10 <sup>-4</sup>	Δ (mm/m °C)
Coefficient of linear thermal expansion		0.112	3°C (mm³/m³ °C)
Resistance to artificial weathering. Xenon arc (3000 hrs)	ISO 4586-2 UNE EN 438-2 ISO 4892-2	Level 5: No change	Grey scale, Levels 1-5
Resistance to ultra-violet light. UV-313 lamp (1500 hrs)	UNE EN 438-2 ISO 4892-3	Level 4,5: Slight change	Grey scale, Levels 1-5
Lightfastness (122 hrs)	ISO 19712-2 UNE 5686:2002	Level 5: No change	Grey scale, Levels 1-5
Colour fastness	ISO-19712-2	Satisfactory	



Property	Method	Result	Units / Measures
Thermal resistance	UNE EN 12667	$q = 104.8$	W / m
		$R = 0.05$	m <sup>2</sup> · K / W
		$\Sigma = 0.396$	W / m · K
Thermal shock resistance (90 - 20 °C / 194 - 68 °F)	ISO-19712-2	Satisfactory	250 Cycles
Surface resistance to damp heat	ISO 19712-2 ISO 4586-2	Satisfactory Level 5: No change	Levels 1-5
Surface resistance to dry heat	ISO 19712-2 UNE-EN 438-2 ISO 4586-2 UNE 56867 UNE 56842	Satisfactory Level 4: Slight change in gloss degree only visible from certain angles	Levels 1-5
Boiling water resistance	NEMA LD3	Without visible changes	
High temperature resistance	NEMA LD3	Without changes	
Surface defects	ISO-19712-2	Satisfactory	No defects
Barcol hardness	ISO-19712-2 ASTM D 2583	60 - 65	Units
Rockwell hardness	ISO-19712-2 ASTM D785 ISO-2039-2	> 85	Units
Falling ball test	ISO-19712-2 ISO-2039-1	240 - 280	N/mm <sup>2</sup>
Resistance to cigarette burns	ISO 19712-2 UNE-EN 438-2	Satisfactory. Level 4: Slight change in gloss degree only visible from certain angles	Levels 1-5
Load test	ISO-19712-2	Satisfactory (No cracks or fissures were observed after the test)	0.12 mm (residual deflection)
Chemical resistance (Method A)	ISO-19712-2	Satisfactory 5 (In all cases, except acetone with level 4)	Levels 1-5
Chemical resistance (Method B)	ISO-19712-2	27	Cleanliness rating from 0 to 75
Chemical resistance	UNE 56867	Satisfactory	
Fire rating	UNE-EN 13501-1	B s1 d0 (Using standard material)	Euroclass
	ASTM E84	Class A	"IBC class"
	DIN 4102-1	B1 (With no restrictions)	
	UL94HB	Satisfactory	
	NFPA 259	Satisfactory (8.04 kJ/g)	
Scratch resistance	UNE-EN 438-2	4	Levels 1-5
	Eq. Mohs	3	
Cracking resistance	UNE-EN 438-2	5	Levels 1-5
Surface permeability	NF Y 30-801	8	g/m <sup>2</sup> day
Resistance to water vapor	UNE 56867 UNE 56842	Satisfactory	
Specific heat	UNE 23721	1.361	J/g K
Water absorption	ASTM D670	0.03	%
Deflection temperature (load 1.82 N/mm <sup>2</sup> )	ASTM D648	>95	°C
Wear & Cleanability	CSA B45.5-11 IAMPO Z124-2011	Complies	
Cutting powder toxicity	UNE-EN ISO 11348-3 MTA/MA - 014 / A11 UNE EN 12457-4	Without effects	



**T H A N K Y O U**

**Goojar Mal Ganpat Rai Private Limited**

**Delhi**

A-17, Block B-1, Mohan Cooperative Indl. Estate, New Delhi 0110044, India.

Tel: Mobile: +91 9873246665 I [011 -46351134 / 9953950053](tel:011-46351134)

Email : [info@gmgrindia.in](mailto:info@gmgrindia.in) I Website: [www.gmgrindia.in](http://www.gmgrindia.in)

**Mumbai**

Unit No-33, Damji Shamji Industrial Estate Off Mahakali Caves Road, Andheri, (East) Mumbai

Landline – 022 26876983, 40022220 Mobile – 7506376173

Email : [\\_sales@gmgrindia.in](mailto:_sales@gmgrindia.in)